

# LP2000 MagnaValve®

## Magnetic Valve for Wheel Machine Applications

### Features

- Flow rate range of 400 - 2000 lb/min (181 - 907 kg/min)\*
- Flow control for wheels up to 50 Hp (37 kw)
- Normally closed
- Variable flow rates
- No moving parts for low maintenance operation
- Regulates flow of steel shot and grit
- Easy retrofit installation

\* Flow rates based on S230 shot

### Description

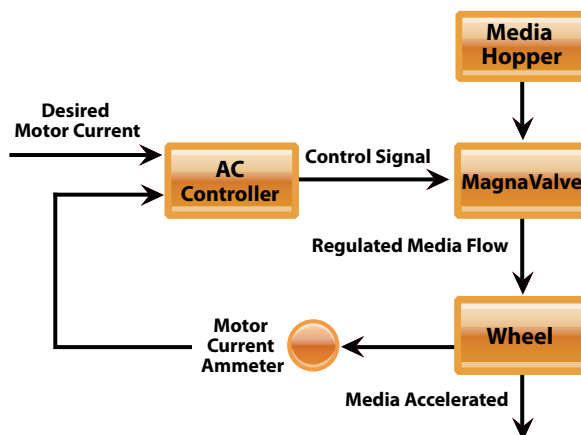
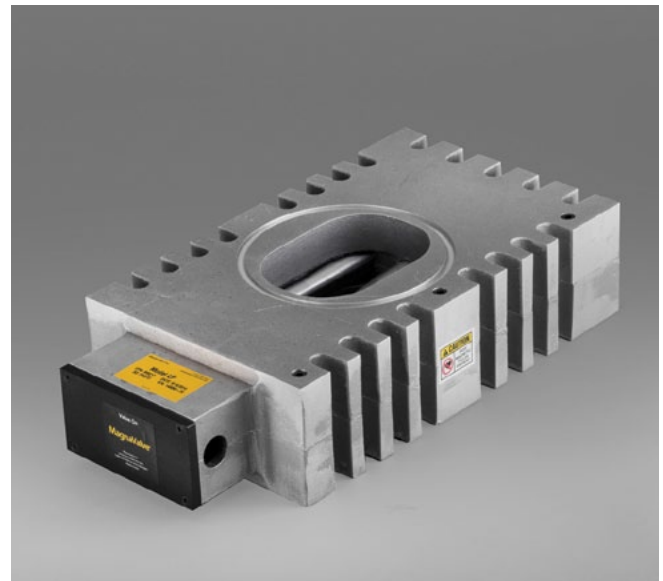
The LP2000 MagnaValve is a normally closed magnetic valve that regulates the flow of steel shot and grit in wheel blast machines. The LP2000 is a low maintenance valve — it has no moving parts so there are no parts to wear or break and it is completely sealed to prevent media dust from entering the valve.

The LP2000 has rare earth permanent magnets for normally closed operation and an electromagnet for controlling shot flow rates. With power applied, the magnetic field is neutralized and shot is allowed to flow through the valve. When no power is applied to the MagnaValve, the permanent magnets stop all flow. If the power is interrupted for any reason, the permanent magnets securely hold the shot, thereby virtually eliminating shot leakage.

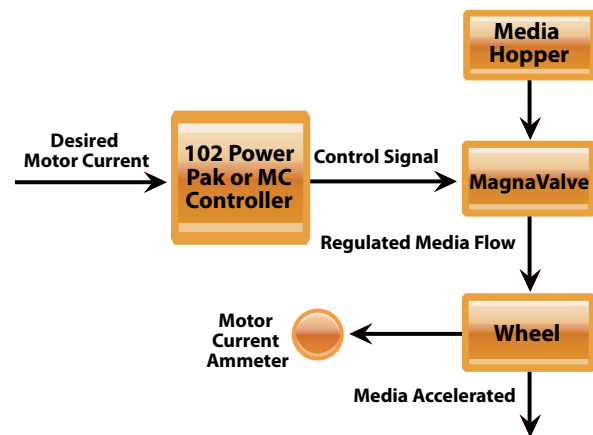
The LP2000 MagnaValve can be used in “automatic” or “manual” mode. For an automatic closed-loop operation, an Electronics Inc. AC Controller will detect the current load on the wheel motor and regulate the flow of media to the LP2000. This closed-loop system will provide accurate and repeatable flow rates over a 400 - 2000 lb/min (181 - 907 kg/min) range. A 102 Power Pack or MC Controller provides “manual” open-loop control.

AC and MC Controller data sheets are available for download at [www.electronics-inc.com](http://www.electronics-inc.com).

A clear and comprehensive instruction manual simplifies installation of the LP2000. The MagnaValve is factory tested and results are supplied upon request. In addition, the products are supported by the Electronics Inc. application engineering staff.



**Closed Loop System** with LP2000 MagnaValve and AC Controller



**Open Loop System** with LP2000 MagnaValve and 102 Power Pack or MC Controller

**Specifications**

Power	+55 Vdc @ .99A PWM
Media	Steel Shot and Grit
Flow Output	400 - 2000 lb/min (181 - 907 kg/min)*
Temperature Range	32°F- 140°F (0°C- 60°C)
Weight	32 lb/14 kg

*\*Flow rates based on S230 shot*

**Dimensions**

Inches [Metric]

