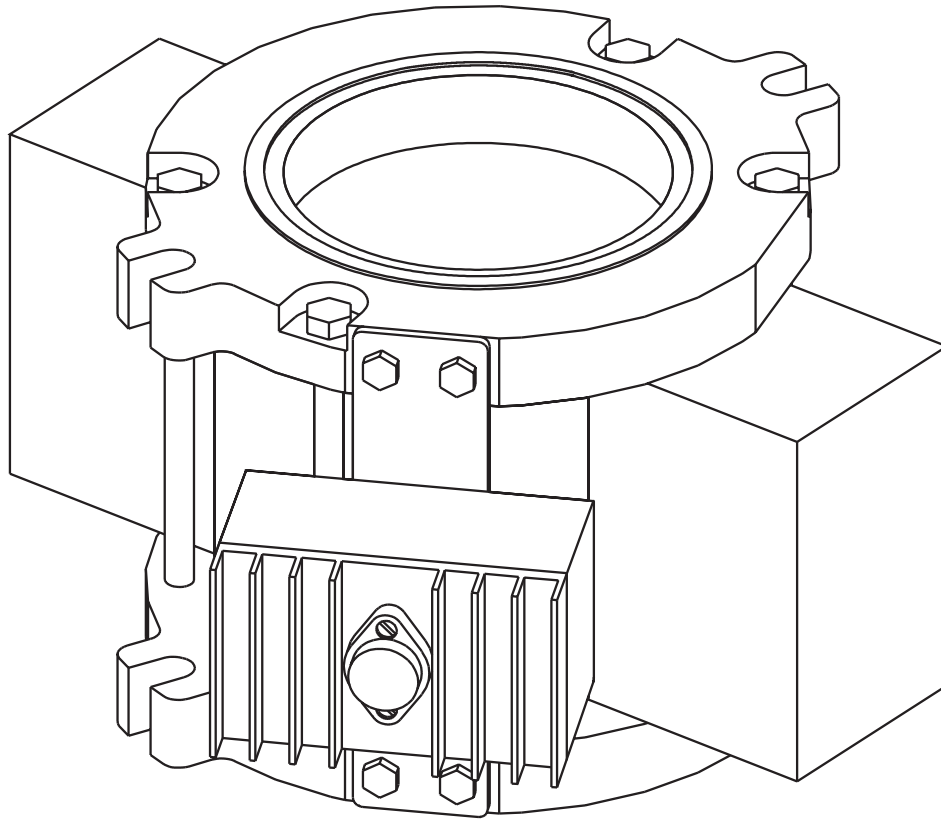


* MODEL 100 MagnaValve *



- * Wheel systems
- * Variable flow rates
- * No moving parts
- * Steel shot
- * Steel grit

- * 400 - 2400 lbs/min range
- * Normally closed
- * Closed or open loop systems

The Mdl 100 MagnaValve is a normally closed magnetic valve that regulates the flow of steel shot and grit in wheel blast machines. The Mdl 100 is a low-maintenance valve — it has no moving parts so there are no parts to wear or break and it is completely sealed to prevent media dust from entering the valve.

The Mdl 100 has rare earth permanent magnets for normally closed operation and an electromagnet for controlling shot flow rates. With power applied, the magnetic field is neutralized and shot is allowed to flow through the valve. When no power is applied to the MagnaValve, the permanent magnets stop all flow. If the power is interrupted for any reason, the permanent magnets securely hold the shot, thereby virtually eliminating shot leakage.

The Mdl 100 MagnaValve can be used in “automatic” or “manual” mode. For an automatic closed-loop operation, an Electronics Inc. AC Controller will detect the current load on the wheel motor and regulate the flow of media to the Mdl 100. This closed-loop system will provide accurate and repeatable flow rates over a 400 - 2400 lb/min range. MC Controller provides “manual” open-loop control. (AC and MC Controller data sheets are available for download at www.electronics-inc.com.)

ELECTRONICS INCORPORATED

* MODEL 100 MagnaValve *

SPECIFICATIONS

VALVE

Input : +60Vdc @ .95A

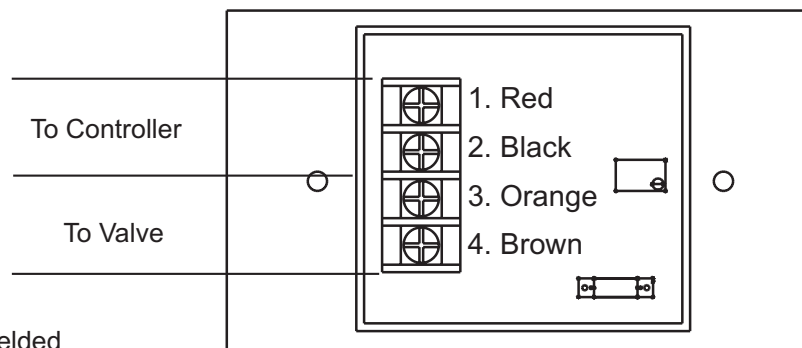
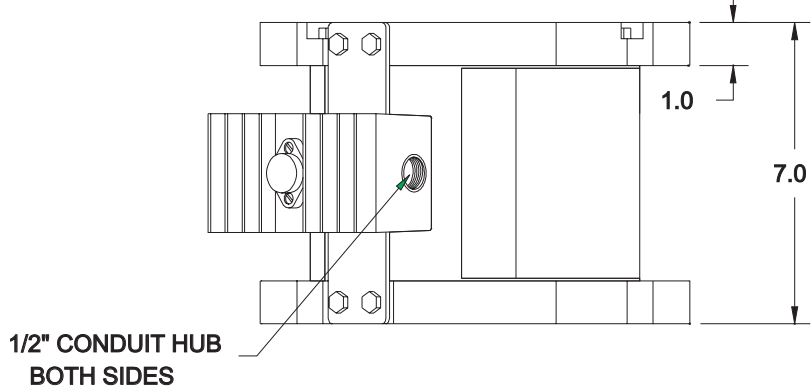
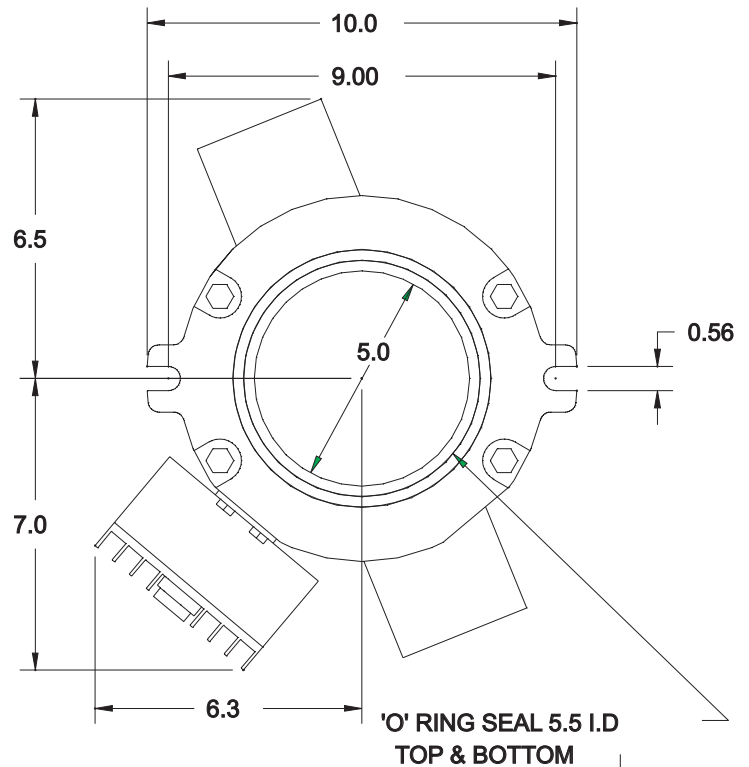
Output : 400 - 2400 lbs/min

Indicator: Red LED = Flow

Temp. Range : 50 - 150 F

Weight: 32 lbs

NOTE : Unit requires an
Electronics Inc. controller
(AC or MC)



CABLE: 2 Conductor Shielded
18 AWG or Equivalent
Connect shield at control only