

VLP1000VAR MagnaValve®

Steel Shot Media Valve for Wheel Blast Machines

Features

- Flow rate range of 200 - 1000 lb/min (91 - 454 kg/min)*
- Regulates flow of steel shot and grit
- For wheels up to 25 Hp (19 kw)
- Variable flow rate using the Variac (included)
- Normally closed
- No moving parts for low maintenance operation
- Easy retrofit installation

* Flow rates based on S230 shot

Description

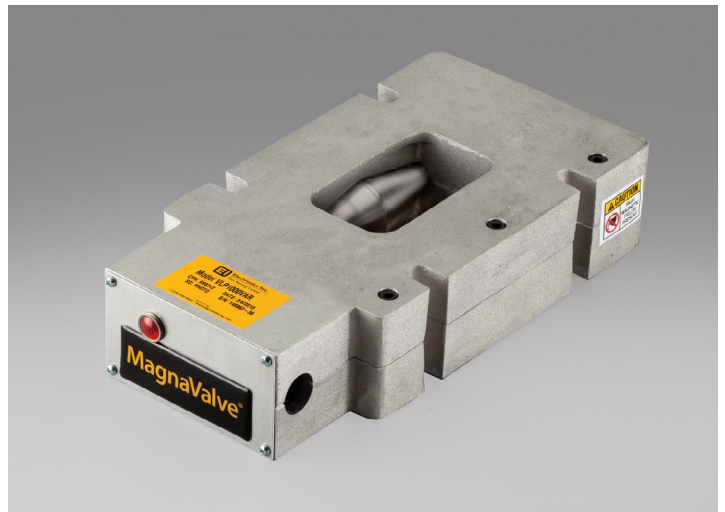
The VLP1000VAR MagnaValve is a normally closed magnetic valve that regulates the flow of steel shot and grit in wheel blast machines. The VLP1000VAR is a low maintenance valve — it has no moving parts so there are no parts to wear or break and it is completely sealed to prevent media dust from entering the valve.

The VLP1000VAR has rare earth permanent magnets for normally closed operation and an electromagnet for controlling shot flow rates. With power applied, the magnetic field is neutralized and shot is allowed to flow through the valve. When no power is applied to the MagnaValve, the permanent magnets stop all flow. If the power is interrupted for any reason, the permanent magnets securely hold the shot, thereby virtually eliminating shot leakage.

The VLP1000VAR MagnaValve is controlled with a Variac. A Variac is a variable AC transformer that provides 0-120 Vac output voltage to the MagnaValve. With zero volts applied to the MagnaValve, the permanent magnets hold the shot. Application of voltage will cancel the permanent magnets' holding force and allow the shot to flow. Higher voltages will provide higher shot flow rates. The Variac is included with the VLP1000VAR MagnaValve.

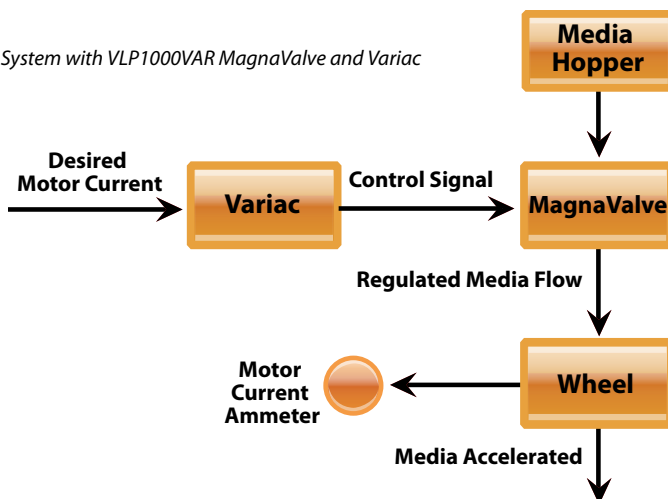
For applications where automatic fault alarms are included, see our model VLP-24 MagnaValve and companion AC-24 Controller at www.electronics-inc.com.

A clear and comprehensive instruction manual simplifies installation of the VLP1000VAR. The MagnaValve is factory tested and results are supplied upon request. In addition, the products are supported by the Electronics Inc. application engineering staff.



The Variac, included with the VLP1000VAR MagnaValve, provides 0-120 Vac output voltage to the MagnaValve.

Open Loop System with VLP1000VAR MagnaValve and Variac



VLP1000VAR MagnaValve

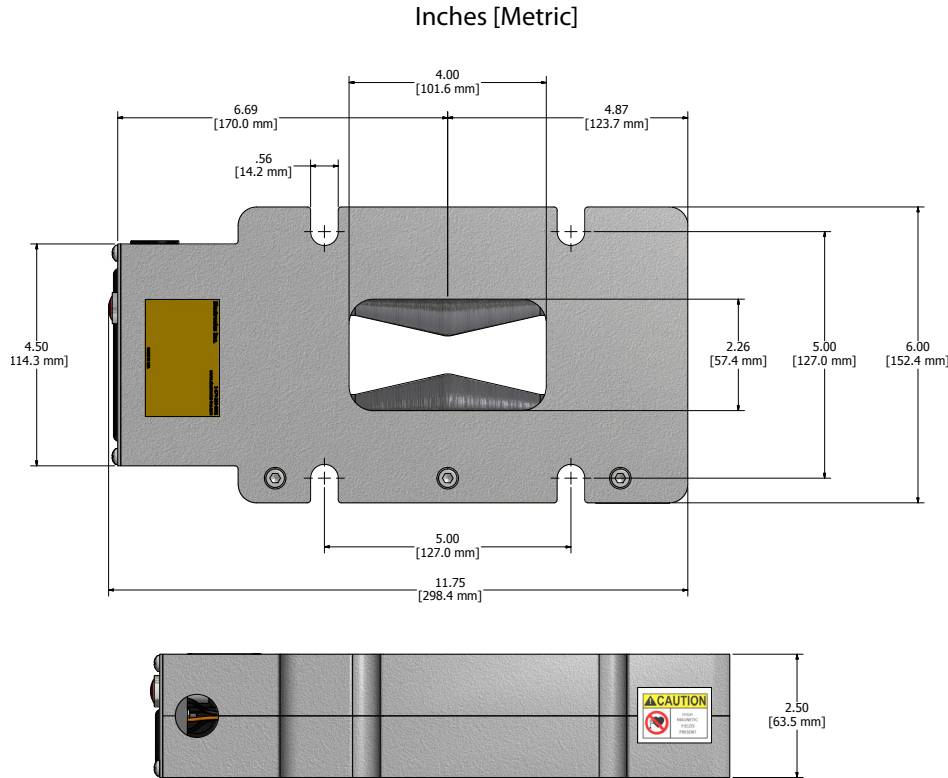
Magnetic Valve for Wheel Machine Applications

Specifications

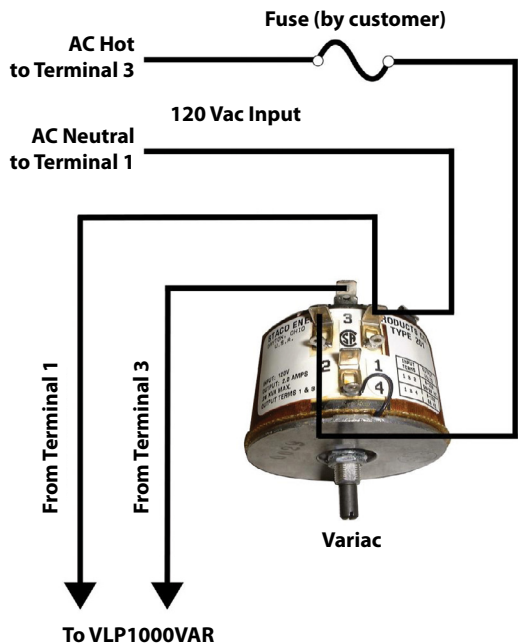
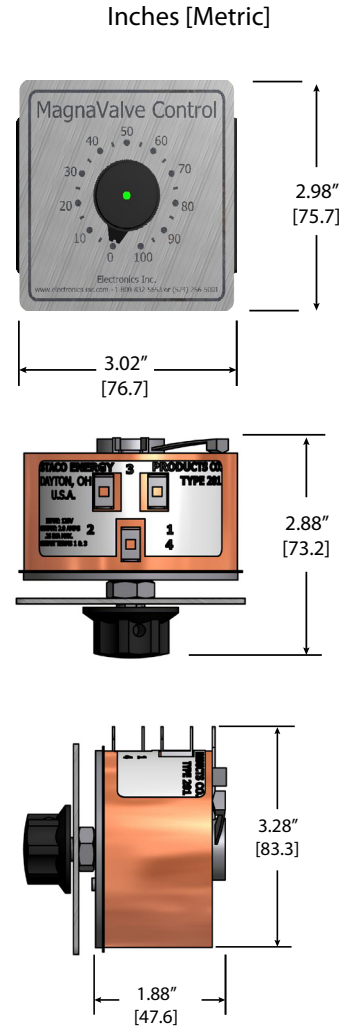
Power 0 - 120 Vac @ 0.1 A
Media Steel Shot and Grit
Flow Output..... 200-1000 lb/min (91-453 kg/min)
Flow rates based on S230 shot

Weight 16 lb/7 kg
Temperature Range 32°C - 212°F (0°C - 100°C)
Indicator Red Neon Lamp
Material..... Cast Aluminum

VLP1000VAR Dimensions



Variac Dimensions



EI Electronics Inc.
Shot Peening Control

Electronics Inc.
 56790 Magnetic Drive
 Mishawaka, Indiana 46545 USA
 (574)256-5001
www.electronics-inc.com

Specification is subject to change without notice
 Rev 2018-10
 MagnaValve is a registered trademark of Electronics Inc.