

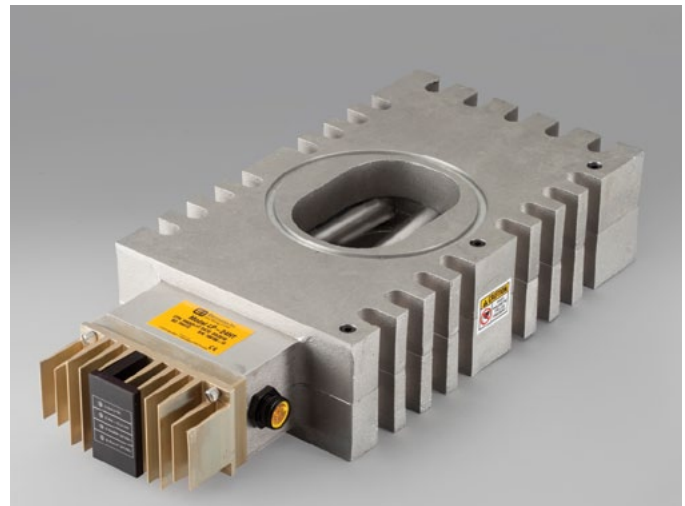
# LP-24HT MagnaValve®

Steel Shot Media Valve for Wheel Blast Machines  
in High-Temperature Environments

## Features

- Flow rate range of 400 - 2000 lb/min (181 - 907 kg/min)\*
- Flow control for wheels up to 50 hp (37 kW)
- Temperature range of 32° - 200°F (0° - 93°C)
- Normally closed
- No moving parts for low maintenance operation
- Diagnostic LEDs for 24 Vdc Power, Enable Command, Flow Input Signal and Shot Flow
- CE compliant

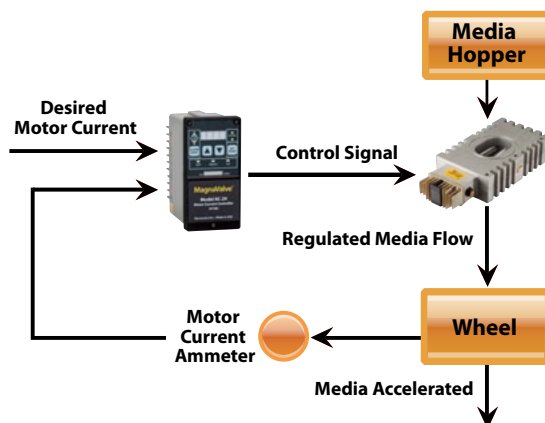
\* Flow rates are based on S230 shot



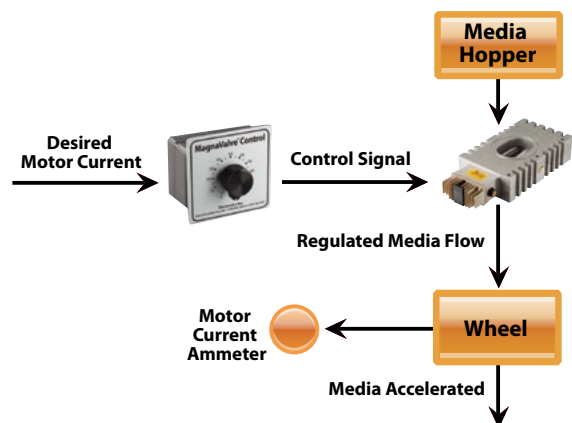
## Description

The LP-24HT MagnaValve® is a normally closed magnetic valve that regulates the flow of steel shot and grit in wheel blast machines. The LP-24HT is a low-maintenance valve — it has no moving parts so there are no parts to wear or break and it is completely sealed to prevent media dust from entering the valve. The LP-24HT has rare earth permanent magnets for normally closed operation and an electromagnet for controlling shot flow rates. With power applied, the magnetic field is neutralized and shot is allowed to flow through the valve. When no power is applied to the MagnaValve, the permanent magnets stop all flow. If the power is interrupted for any reason, the permanent magnets securely hold the shot, thereby virtually eliminating shot leakage. The VD13HT valve driver on the LP-24HT operates in temperatures up to 200°F (93°C), making it the ideal MagnaValve for high-temperature, high-volume environments such as foundries and other similar blast cleaning operations.

For an “automatic” closed-loop operation, an Electronics Inc. (EI) AC-24 Controller (sold separately) will detect the current load on the wheel motor and regulate the flow of media through the LP-24HT. This closed-loop system will provide accurate and repeatable flow rates over a 400 - 2000 lb/min (181 - 907 kg/min) range. The EI Pot-24 Controller (sold separately) provides “manual” open-loop control.



*Closed Loop System with AC-24 Controller*



*Open Loop System with Pot-24 Controller*

# LP-24HT MagnaValve

Steel Shot Media Valve for Wheel Blast Machines  
in High-Temperature Environments

## Specifications

Power	24 Vdc @ 2A (50 VA) $\pm 2$ Vdc
Media	Steel Shot and Grit
Mode	Normally Closed
Flow Output	400 - 2000 lb/min (181 - 907 kg/min)*
Temperature Range	32°F - 200°F (0°C - 93°C)
Weight	30 lb (13.6 kg)
Servo Command Input	0 - 10 Vdc

\* Flow rates are based on S230 shot

## Dimensions

Inches [Millimeters]

