

MODEL LP2000/VAR

999316

- 400-2000 lbs/min range
- Normally closed
- Variable Flow rates
- Wheel systems
- No moving parts
- Cast Steel shot
- Cast Steel grit



The MagnaValve is a normally closed magnetic valve that is ideal for regulating flow rates of steel shot or grit in abrasive blast cleaning or shot peening machines. Used with a Variac transformer the MagnaValve will provide accurate and repeatable flow rates over a 400-2000 lbs/min. flow range.

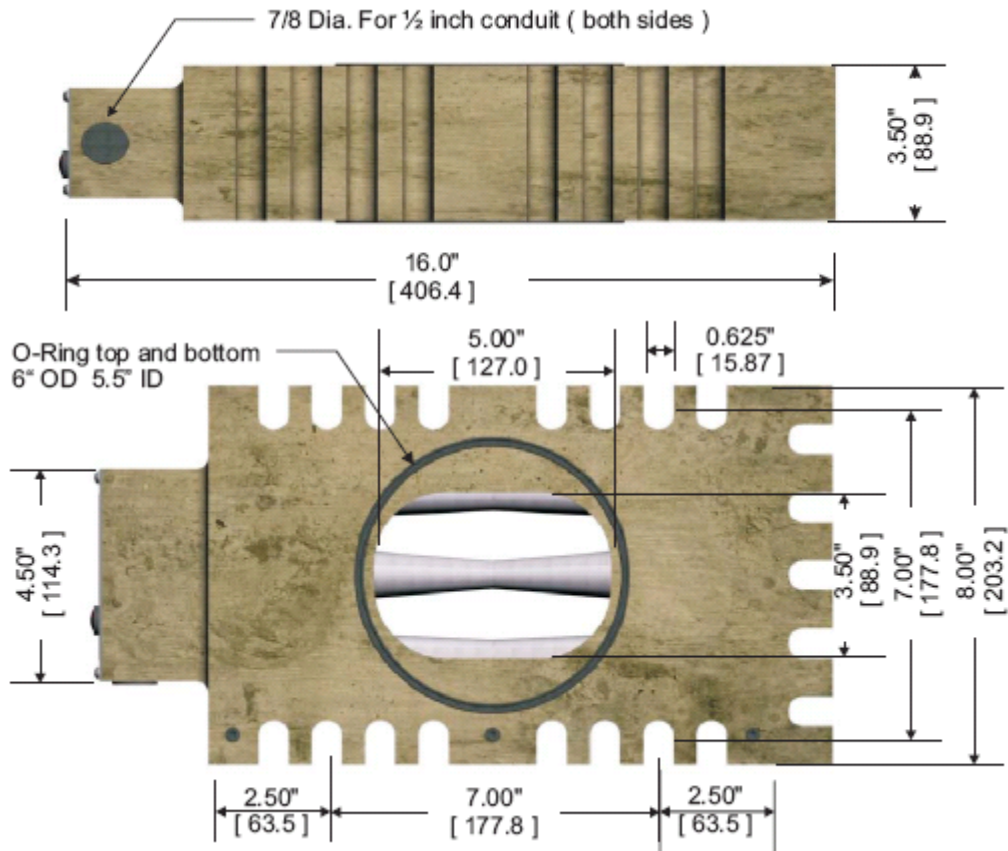
The valve construction includes a permanent magnet for normally closed operation and an electromagnet for initiating the shot flow. By regulating the voltage to the electromagnet any desired flow rate may be achieved. When power is off, the valve will hold shot due to the permanent magnet

Smaller sizes of stainless steel cut wire shot will not work with this model MagnaValve. For those applications see model LP1000/VAR for 1000 lb/min capacity.

The VAR series MagnaValves provide a high degree of control of media but will not recognize fault conditions such as low flow rates. Contact the factory for other valve series which work with the AC amperage controller for those applications. The AC amperage controller has a large digital display of motor amps and high/low alarms.

ELECTRONICS INCORPORATED

MODEL



CPN# 090100

Specifications

Input:	0-120Vac @ 0.225A
Output:	400-2000 lbs/min.
Temp. Range:	0°-100° C (32°-212° F)
Indicator:	1 Red Neon Lamp
Material:	Cast Aluminum
Weight:	32 lbs/ 14 kg

Control of the VAR series MagnaValve is accomplished by using a device called a Variac. This is a variable AC transformer that provides 0-120Vac output voltage to the MagnaValve. With zero volts applied to the MagnaValve the permanent magnets hold the shot. Application of voltage will cancel the permanent magnet holding force and allow the shot to flow. Higher voltages will provide higher shot flow rates.

The Variac control is included with the MagnaValve

56790 Magnetic Drive, Mishawaka, IN, USA 46545 (574) 256-5001