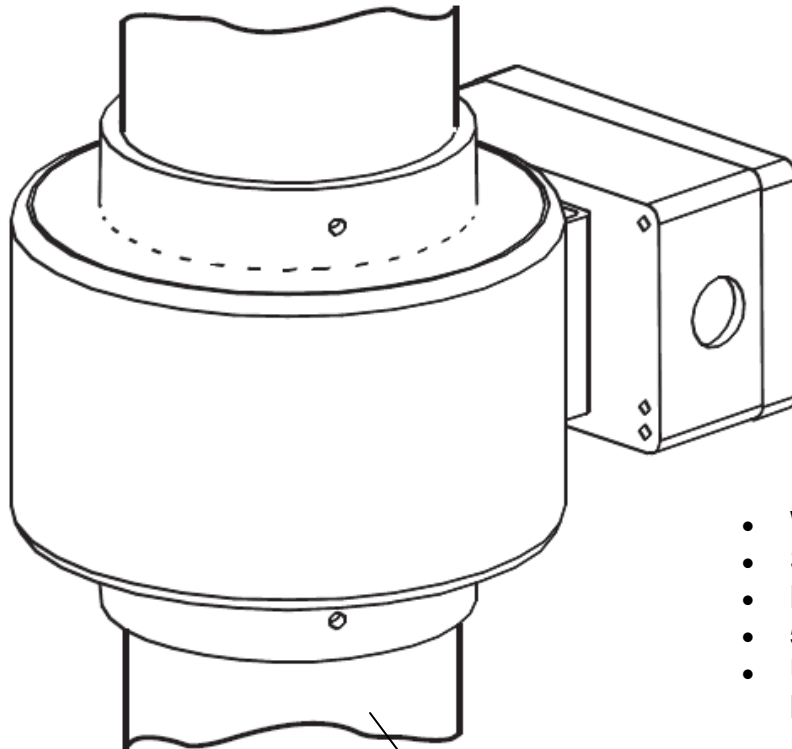


MODEL 599-5.0 SENSOR

999301



CUSTOMER
BLAST HOSE

- Wheel Blast systems
- Steel shot/ grit
- No moving parts
- 500—4000 lbs/min
- Used with the Model 260 Flow Monitor or FC Controller

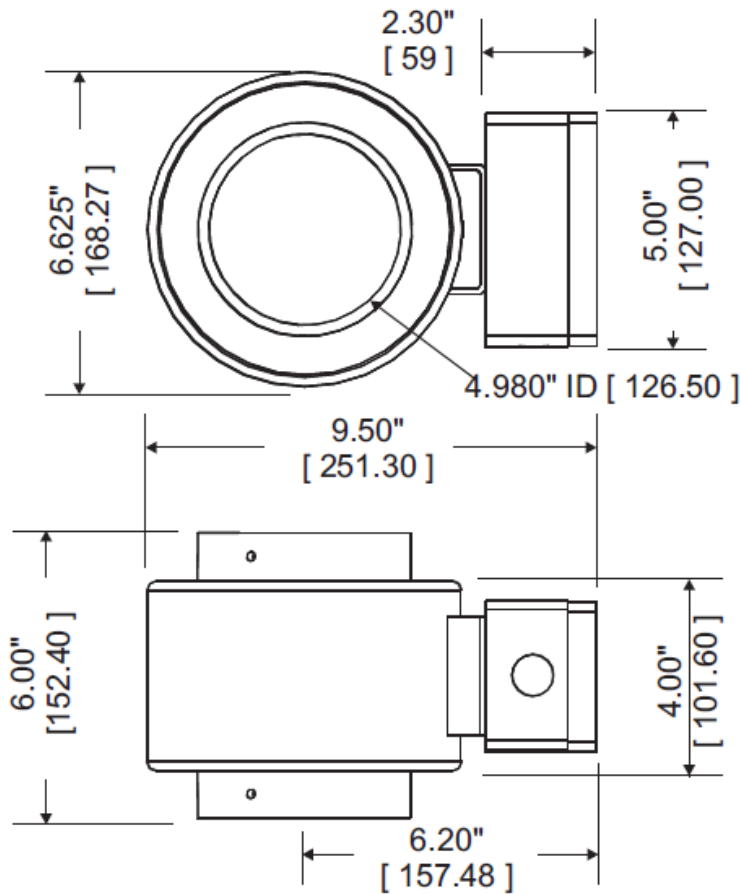
The Model 599 5.0 Inductive Sensor is constructed on a 5" PVC pipe located above the wheel in a blasting system, The supplied junction box allows for easy connection to the sensor.

The sensor is placed in the system after the flow rate has been regulated. The sensor detects density of ferrous media and this signal is then scaled to display flow rate, providing media flow velocity is constant.

The 599A sensor incorporates a pre-amplifier circuit to allow for high noise immunity and a 0-5 Vdc output.

ELECTRONICS INCORPORATED

MODEL 599-5.0 SENSOR



Specifications	
Size - ID:	4.980" / 127 mm
Height:	6"
Weight:	6 lbs
Flow Inlet:	5" PVC
Flow Outlet:	5" PVC
Range:	500-4000 lbs/min
Power:	+12VDC @100mA -12VDC @ 60mA
Output:	0-5VDC
Adjustments:	Zero, Span
Accuracy:	± 5% of Full Scale

Note: .875" DIA.
[22.225] CONDUIT
HOLE ON BOTTOM
AND LEFT SIDE OF
JUNCTION BOX.

Note: This sensor is designed to fit over a non-metallic hose (4.900" O.D.) The bore material is PVC and will not resist abrasion by shot or grit.

Cable : Use 4 conductor shielded 20 AWG or larger. In separate conduit

JUNCTION BOX

