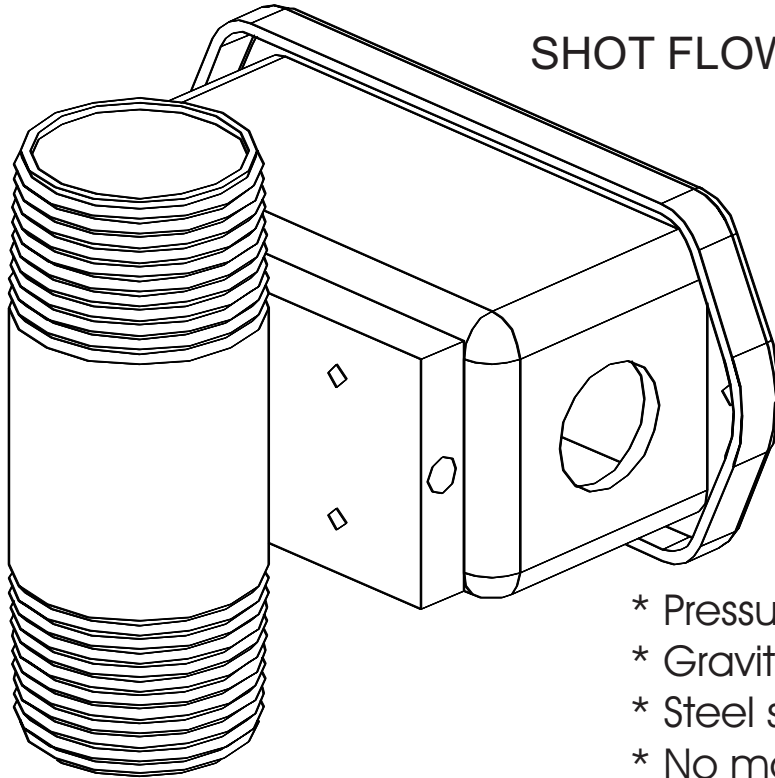


* MODEL 399-1.25 TS SENSOR *

SHOT FLOW RATE SENSOR



- * Pressure systems
- * Gravity Fed systems
- * Steel shot/grit
- * No moving parts
- * 5 - 25 lbs/min
- * Steel Pipe Construction
- * Used with Model 260 Flow Monitor

The Model 399-1.25 TS Inductive Sensor is constructed in a 1-1/4" x 4" steel pipe and should be located above the mixing tee in a direct pressure blasting system. The supplied junction box allows for easy connection of the sensor to the Model 260 shot flow monitor. See the 260 data sheet for additional information.

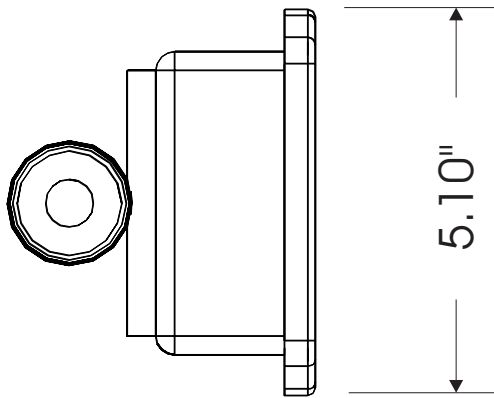
The sensor is placed in the system after the flow rate has been regulated. The sensor detects density of ferrous media and this signal is then scaled to display flow rate, providing media flow velocity is constant.

ELECTRONICS INCORPORATED

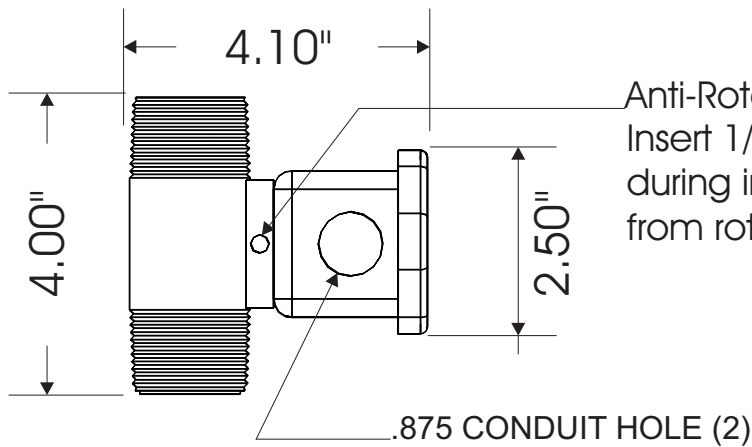
SHOT PEENING TECHNOLOGY

399TDATA.CDR 6/25/02

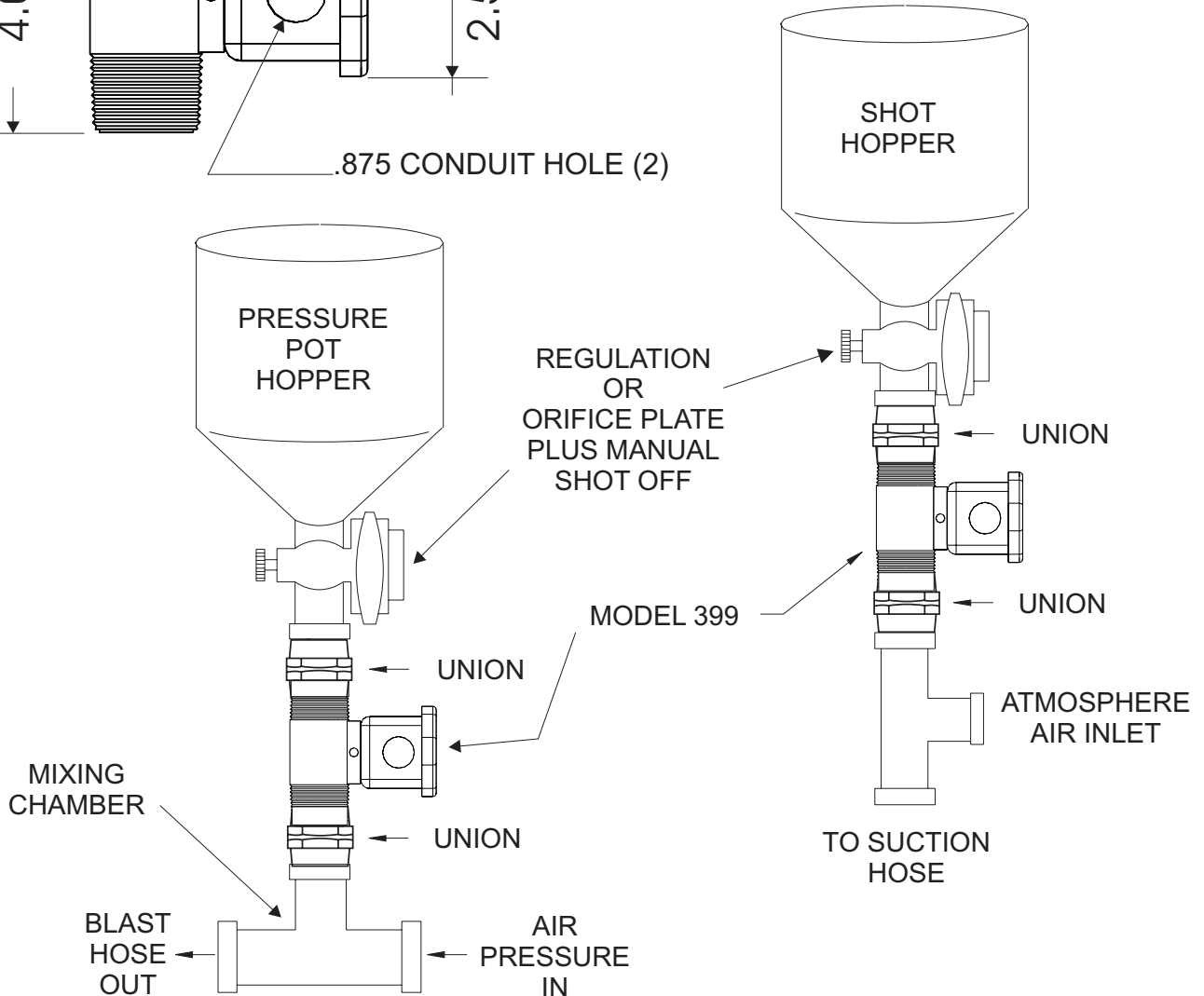
* MODEL 399-1.25 TS SENSOR *



Specifications
Size - ID : 1.25
Flow inlet : 1.25" NPT (.0625 id)
Flow outlet : 1.25" NPT (.0625 id)
Range : 5 - 25 lbs/min
Signal : 11.4khz osc.



Anti-Rotation Pin Hole
Insert 1/4" Dia. pin or screwdriver
during installation to hold sensor
from rotating



399TDATA.CDR 6/25/02