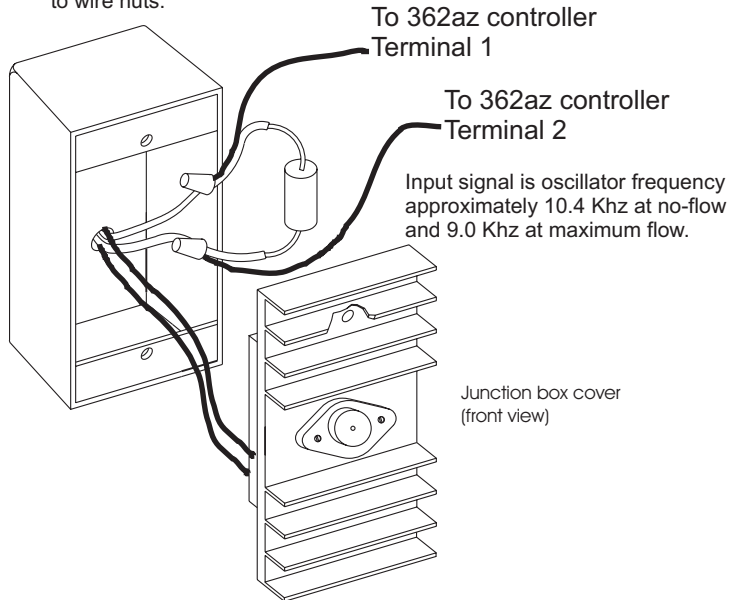


* Application Note AN-175 *

WIRE CONNECTIONS FOR A 362a or 362az FLOW CONTROLLER TO 377, 378, 379, 380 or 390 MAGNAVALVES

Flow sensor wires and a 1uf Capacitor are attached to wire nuts.



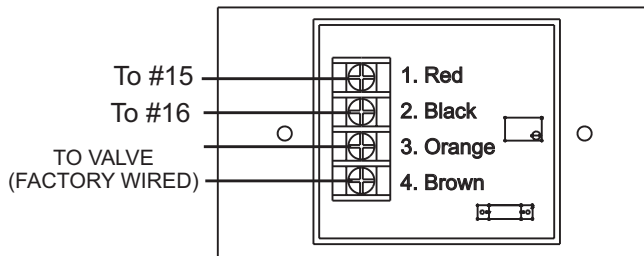
NOTE: Be sure the 362 controller is set to frequency. (Input selector switch located inside control is in freq in position.)

Cable to MagnaValve
2 Pair shielded 18 AWG or Equal

CONNECT SHIELD TO TERMINAL 2 ONLY

MODEL 362a or 362az

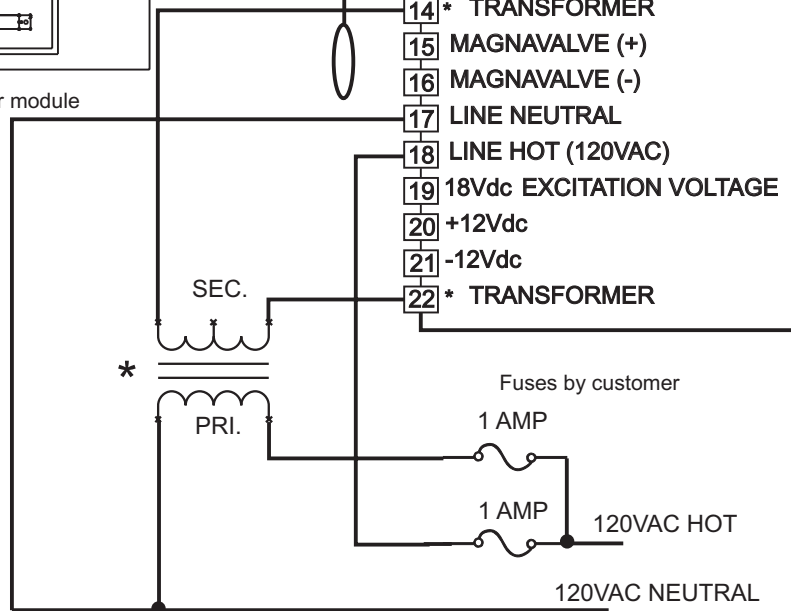
| | | |
|-----|--------------------------|--------------|
| 1 | SENSOR | |
| 2 | COMMON | REMOTE |
| 3 | 0-10VDC IN | SET POINT |
| 4 | 0-10VDC OUT | RECORDER OUT |
| 5 | COMMON | |
| 6 | SPECIAL | |
| 7 | COMMON | |
| 8 | REMOTE MODE (120VAC) | |
| 9 | ALARM COMMON | |
| 10 | HI ALARM OUT | |
| 11 | LO ALARM OUT | |
| 12 | ENABLE (120VAC) | |
| 13 | ALARM RESET (120VAC) | |
| 14* | TRANSFORMER | |
| 15 | MAGNAVALVE (+) | |
| 16 | MAGNAVALVE (-) | |
| 17 | LINE NEUTRAL | |
| 18 | LINE HOT (120VAC) | |
| 19 | 18Vdc EXCITATION VOLTAGE | |
| 20 | +12Vdc | |
| 21 | -12Vdc | |
| 22* | TRANSFORMER | |



Junction box cover is valve driver module type VD-7 (rear view)

NOTE : THIS DATA SHEET IS FOR 362a or 362az CONTROLS WITH REV "B" BOARDS. REFER TO AN-102 FOR OLDER MODEL 362

* 48Vac 100VA TRANSFORMER



56790 Magnetic Drive Mishawaka, In. USA 46545 (574) 256-5001
ELECTRONICS INCORPORATED