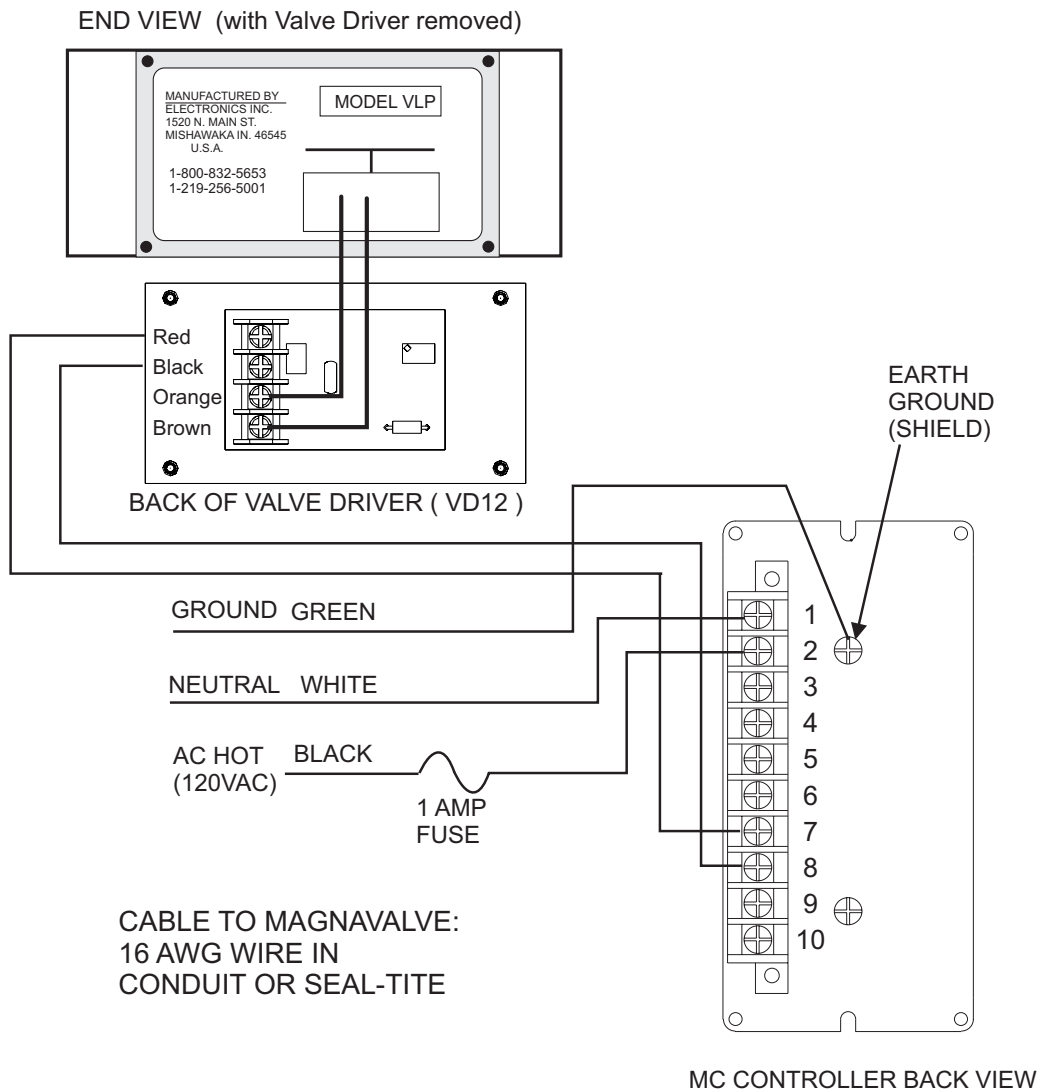


* Application Note AN-138 *

WIRE CONNECTIONS FOR VLP OR LP VALVE TO AN MC FLOW CONTROLLER



Wiring Connections

1. Power Neutral (120Vac)
2. Power Hot (120Vac)
3. Enable Input (120Vac)
4. (+) 10Vdc Reference Output
5. (+) 12Vdc Excitation Output
6. (-) 12Vdc Excitation Output
7. (+) MagnaValve Output
8. (-) MagnaValve Output
9. Circuit Common
10. Remote Setpoint Input (0-10Vdc)

NOTE: Green screw for earth-chassis ground
used for shield termination.

56790 Magnetic Drive Mishawaka, In. USA 46545 (574) 256-5001
ELECTRONICS INCORPORATED