

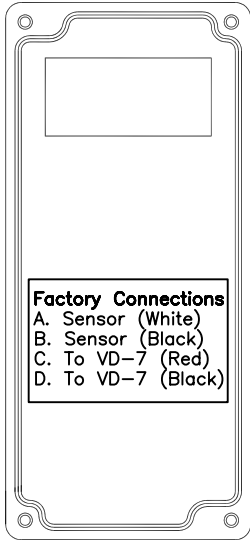
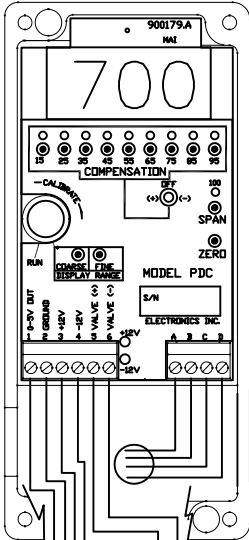
# \* Application Note AN-131 \*

WIRE CONNECTIONS FOR 250P & 500P VALVE TO 362a FLOW CONTROLLER

VALVE JUNCTION BOX

LID

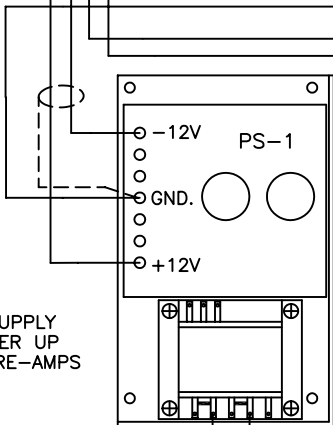
NOTE: DIAGRAM SHOWS MIN. WIRE CONNECTIONS FOR PROPER OPERATION



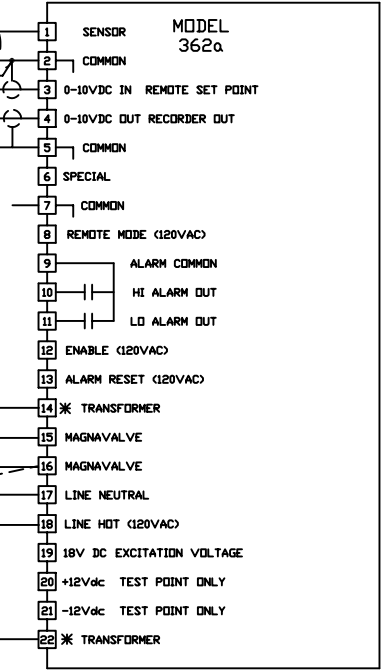
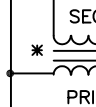
CONNECT SHIELD TO TERMINAL 2

CABLE TO MAGNAVALVE  
BELDEN 9773  
3 PAIR SHIELDED 18 AWG  
OR EQUAL

POWER SUPPLY  
CAN POWER UP  
TO 12 PRE-AMPS



120VAC Neutral



.5 AMP FUSE

1 AMP FUSE

120VAC HOT

\* TRANSFORMER SIZED PER CHOICE OF MAGNAVALVE. SEE MAGNAVALVE FOR VOLT/AMPS.

1520 N. Main Mishawaka, IN USA 46545 (219) 256-5001

**ELECTRONICS INCORPORATED**